

MLS Area 3

Residential Statistics



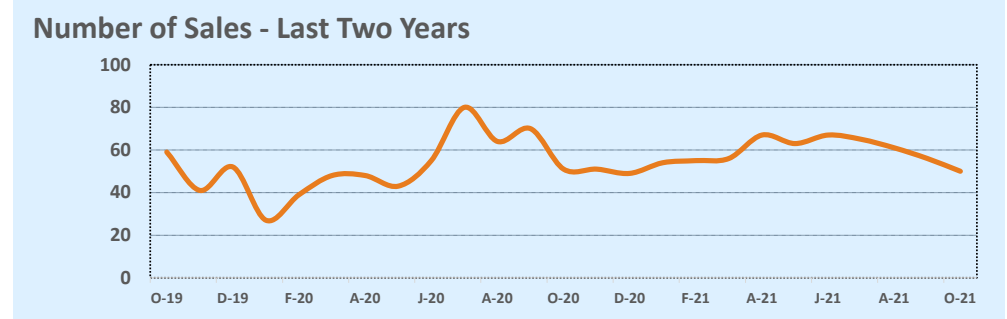
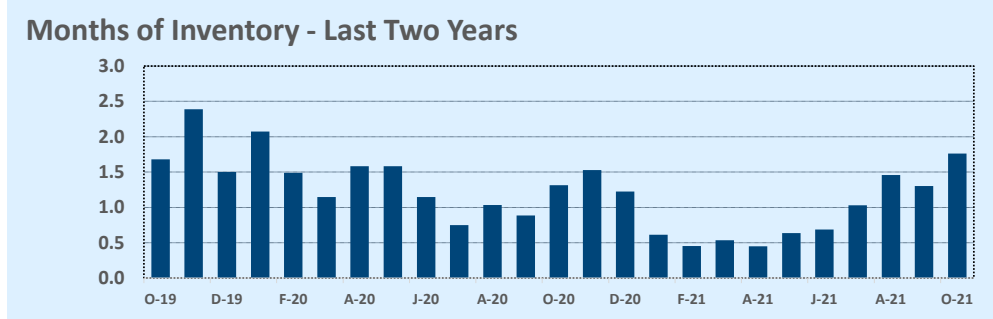
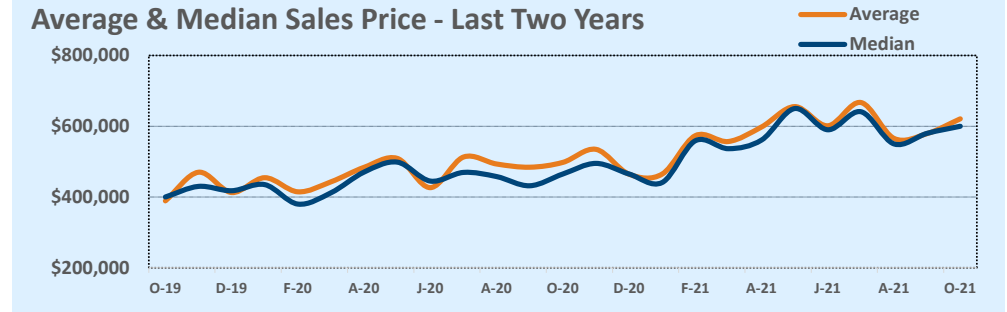
October 2021

Listings	This Month			Year-to-Date		
	Oct 2021	Oct 2020	Change	2021	2020	Change
Single Family Sales	41	43	-4.7%	432	411	+5.1%
Condo/TH Sales	9	8	+12.5%	162	114	+42.1%
Total Sales	50	51	-2.0%	594	525	+13.1%
New Homes Only	3	4	-25.0%	72	50	+44.0%
Resale Only	47	47	--	522	475	+9.9%
Sales Volume	\$31,046,795	\$25,388,026	+22.3%	\$350,808,088	\$250,166,271	+40.2%
New Listings	67	81	-17.3%	761	660	+15.3%
Pending	--	--	--	--	--	--
Withdrawn	5	2	+150.0%	21	23	-8.7%
Expired	5	2	+150.0%	21	23	-8.7%
Months of Inventory	1.8	1.3	+34.0%	N/A	N/A	--

Price Range	This Month			Year-to-Date		
	New	Sales	DOM	New	Sales	DOM
\$149,999 or under	1	--	--	1	--	--
\$150,000- \$199,999	--	1	5	16	18	42
\$200,000- \$249,999	2	1	50	25	19	53
\$250,000- \$299,999	--	--	--	15	12	7
\$300,000- \$349,999	--	3	14	15	25	17
\$350,000- \$399,999	1	2	5	37	27	38
\$400,000- \$449,999	3	2	11	41	41	34
\$450,000- \$499,999	4	3	57	86	51	27
\$500,000- \$549,999	7	9	40	77	79	20
\$550,000- \$599,999	18	4	29	104	58	13
\$600,000- \$699,999	19	13	18	162	112	14
\$700,000- \$799,999	6	4	13	76	59	13
\$800,000- \$899,999	1	4	27	46	47	15
\$900,000- \$999,999	4	1	16	36	20	8
\$1M - \$1.99M	1	3	3	24	26	5
\$2M - \$2.99M	--	--	--	--	--	--
\$3M+	--	--	--	--	--	--
Totals	67	50	24	761	594	20

Average	This Month			Year-to-Date		
	Oct 2021	Oct 2020	Change	2021	2020	Change
List Price	\$620,702	\$492,442	+26.0%	\$563,876	\$475,583	+18.6%
List Price/SqFt	\$410	\$314	+30.4%	\$365	\$306	+19.1%
Sold Price	\$620,936	\$497,804	+24.7%	\$590,586	\$476,507	+23.9%
Sold Price/SqFt	\$407	\$315	+29.3%	\$381	\$307	+24.2%
Sold Price / Orig LP	99.5%	101.0%	-1.5%	104.7%	100.0%	+4.7%
Days on Market	24	15	+59.4%	20	25	-20.7%

Median	This Month			Year-to-Date		
	Oct 2021	Oct 2020	Change	2021	2020	Change
List Price	\$593,538	\$460,000	+29.0%	\$549,000	\$450,000	+22.0%
List Price/SqFt	\$381	\$293	+30.1%	\$352	\$299	+17.6%
Sold Price	\$599,950	\$465,000	+29.0%	\$567,090	\$450,000	+26.0%
Sold Price/SqFt	\$388	\$307	+26.1%	\$370	\$304	+21.8%
Sold Price / Orig LP	100.0%	100.0%	+0.0%	101.4%	100.0%	+1.4%
Days on Market	14	7	+100.0%	6	7	-14.3%



Based on information from the Austin Board of REALTORS® (alternatively, from ACTRIS). Neither the Board nor ACTRIS guarantees or is in any way responsible for its accuracy. The Austin Board of REALTORS®, ACTRIS and their affiliates provide the MLS and all content therein "AS IS" and without any warranty, express or implied. Data maintained by the Board or ACTRIS may not reflect all real estate activity in the market.